

NEW - February 26, 2010

GIS compilation of geodata from Baffin Bay, NW Greenland

In preparation for the Licensing Round

GEUS, TGS-Nopec Geophysical Company ASA and the Bureau of Minerals and Petroleum has Feb. 26, 2010 finalized a comprehensive GIS compilation of information from the Baffin Bay region.

The study has been carried out by GEUS and is based on all TGS data and on public domain data and includes seismic interpretation, mapping and evaluation of prospectivity, petroleum systems and geohazards.

The GIS product contains dvd's with:

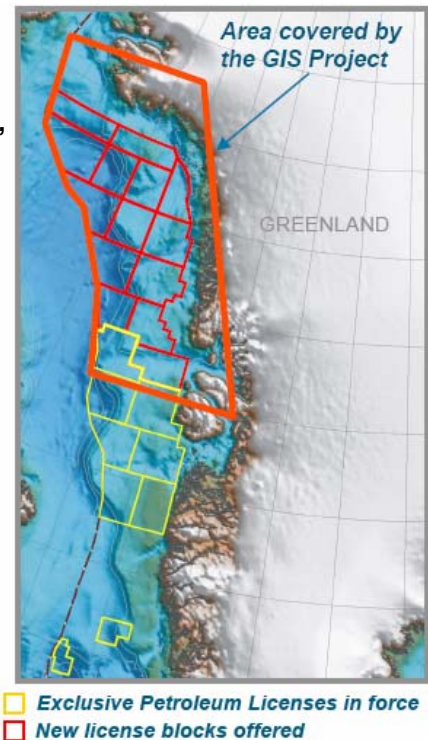
1. Four new comprehensive reports & powerpoints:

*Petroleum Systems, Seismic Interpretation & Prospectivity Evaluation,
Seabed Features & Geohazards and Stratigraphy*

2. All interpreted horizons from workstation (xyz) to load

3. A GIS dvd with combination layers and interpreted maps

- **Play- and Trap types** (incl. maps, conceptual model and examples)
- **Maturity maps, closures and migration routes**
- **Structural elements and tectonics maps**
- **Magnetic and gravity anomalies**
- **Interpreted Mesozoic and Cenozoic key horizons and isochores**
- **Seismic examples with key horizons, structures and DHI's**
- **Seabed features and potential geohazard risks**
- **Onshore geology and cross sections**
- **Geographical-cultural info, including licenses, borders and shorelines**
- **Bibliography with relevant references and links to data and publications**



The final GIS compilation with four special studies is now available

Price and terms: 1 million DKK exclusive of data.

For further information on details of the GIS themes, data requirements, deliverables, cost & payment scheme and other terms, please contact:

*TGS: Jens Christian Olsen; Tel: +45 3874 5950; email: jenschristian@tgsnopec.no, or
GEUS: Flemming Getreuer Christiansen; Tel: +45 3814 2124; email: fgc@geus.dk*

